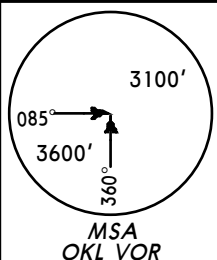
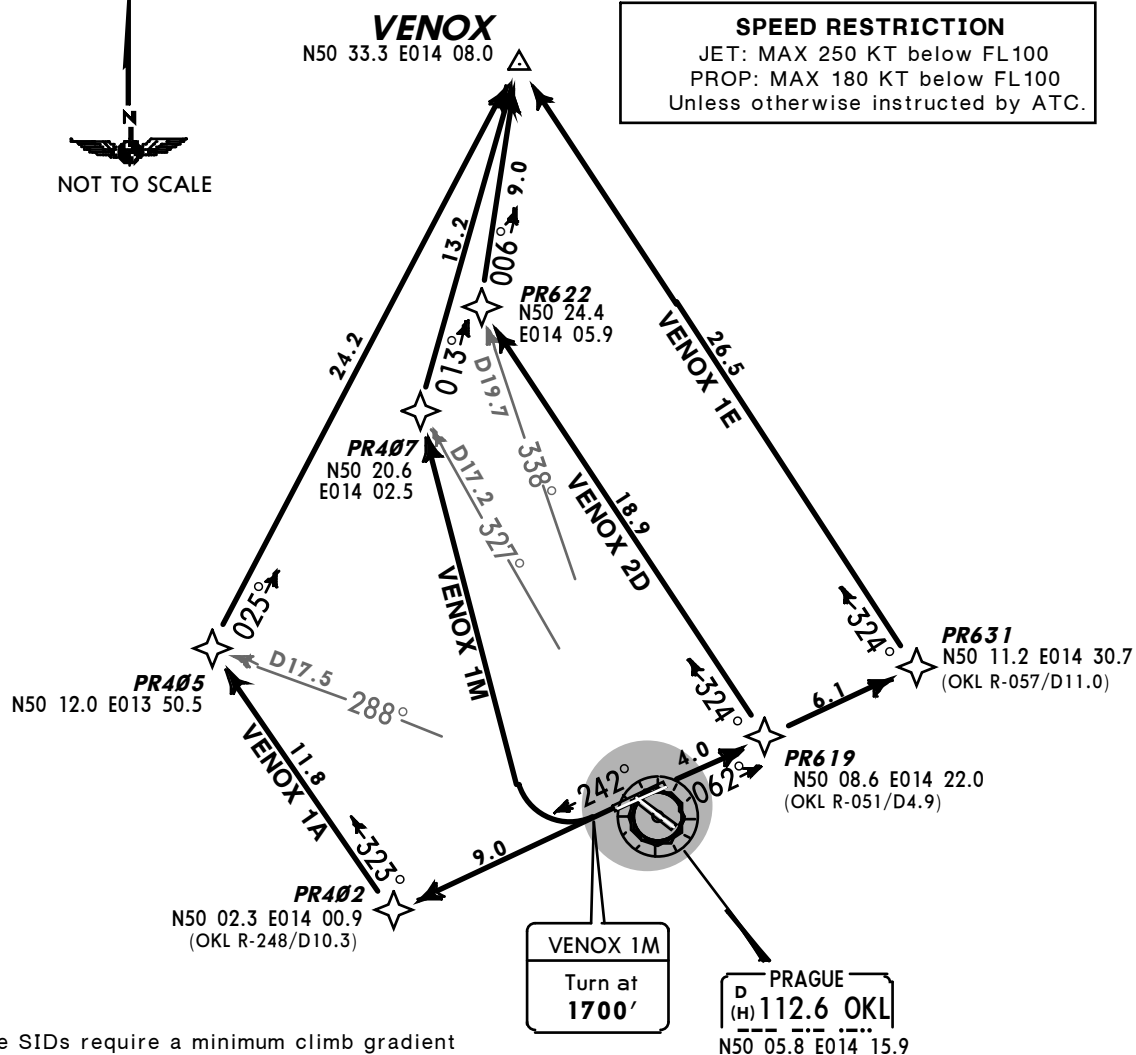
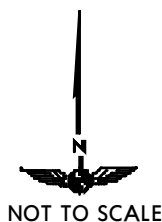


PRAGUE Radar
120.52Apt Elev
1247'Trans level: By ATC Trans alt: 5000'
Contact PRAGUE Radar immediately after take-off.VENOX ONE ALFA (VENOX 1A) [VENO1A]
VENOX TWO DELTA (VENOX 2D) [VENO2D]
VENOX ONE ECHO (VENOX 1E) [VENO1E]
VENOX ONE MIKE (VENOX 1M) [VENO1M]

RWYS 24, 06 RNAV DEPARTURES

P-RNAV REQUIRED



These SIDs require a minimum climb gradient of 5% up to 3200' due to noise abatement.

Gnd speed-KT	75	100	150	200	250	300
5% V/V (fpm)	380	506	760	1013	1266	1519

Initial climb clearance **5000'**

SID	RWY	ROUTING
VENOX 1A	24	242° track to PR402, turn RIGHT, 323° track to PR405, turn RIGHT, 025° track to VENOX.
VENOX 2D ①	06	062° track to PR619, turn LEFT, 324° track to PR622, turn RIGHT, 006° track to VENOX.
VENOX 1E		062° track to PR631, turn LEFT, 324° track to VENOX.
VENOX 1M ②	24	242° track to 1700', turn RIGHT to PR407, turn RIGHT, 013° track to VENOX.

① Only for propeller driven aircraft.

② Only for propeller driven aircraft between 0600-2200 LT.